

OPENING UP NEW HORIZONS



Products

YOUR PARTNER FOR
RUBBER INJECTION MOULDING SYSTEMS



PRODUCT OVERVIEW

Stability in changing times

Today's economy is characterised by permanent change: on the one hand, new markets are opening up, but at the same time new competitors are entering the international market. MAPLAN has decided on its priorities – uncompromising quality and absolute reliability. As part of the established Starlinger Group, we are among the leading companies in the field of rubber injection moulding – with the reliability, the highest quality products combined with a top-class service programme. The reliability of your equipment is a crucial success factor.



Vertical Top Inject

The classical machine with the FIFO rubber injection unit and the fully hydraulic clamp system. Compact and modular design allows perfect customization.

clamp force: 500 kN, 800 kN, 1.600 kN, 2.500 kN, 3.000 kN, 4.000 kN, 6.500 kN, 8.000 kN, on request 10.000 kN to 14.000 kN
injection volumes: 100 ccm to 8.600 ccm (2.000 bar)



Vertical Bottom Inject

The tradition continues – fully hydraulic clamp system and bottom injection in latest technical design offers modern modular executions.

clamp force: 1.600 kN, 2.500 kN, 3.000 kN, 4.000 kN, 6.500 kN, 8.000 kN
injection volumes: FIFO: 750 ccm to 2.500 ccm (2.000 bar)
 screw/ram: 2.700 ccm to 12.700 ccm



Ergo-line

Keeping the advantageous features of the Maplan fully hydraulic clamp and the FIFO injection unit was the target for our latest ergonomic development. Ergo-line has achieved the most ergonomic design for high speed movements and has the optimum basis for automation.

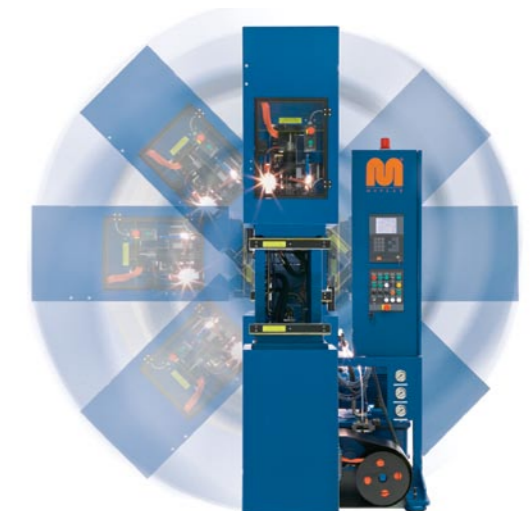
clamp force: 2.800 kN, 4.600 kN, 6.300 kN, 8.000 kN, on request 10.000 kN to 12.000 kN
injection volumes: 750 ccm to 8.600 ccm (2.000 bar)



Horizontal Machines

Further developments for the machine range resulted in the "E1 O-ring series", which is ground-breaking in production of high precise, flash-less parts in a fully automated environment.

clamp force: 1.000 kN, 1.900 kN, 3.000 kN, 4.000 kN, 6.500 kN, 8.000 kN
injection volumes: 130 ccm to 8.600 ccm (2.000 bar)



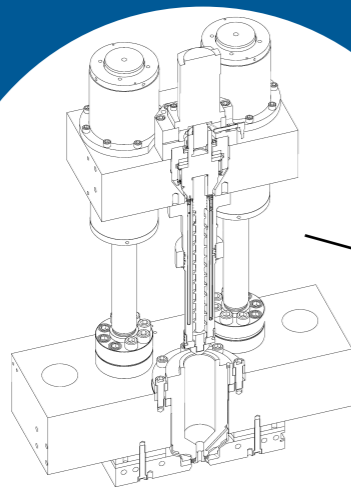
C-frame Machines

The compact smaller machine series offers through its C-frame clamp design an 3-sided free access to the mould area and is therefore perfect for corner joint production of profiles and hoses. Also for smaller rubber parts the machine is a cost effective alternative.

clamp force: 150 kN, 270 kN, 400 kN, 800 kN, 1.000 kN, on request 1.600 kN
injection volumes: 10 ccm to 400 ccm (2.000 bar)

FEATURES

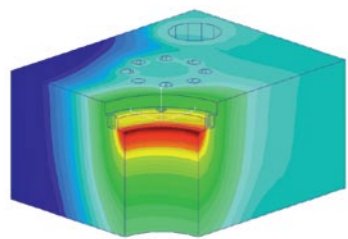
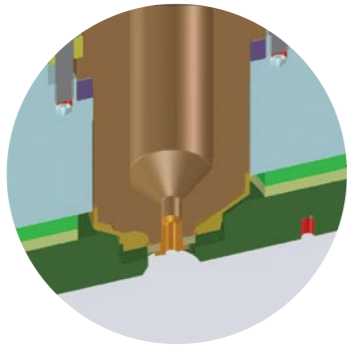
- MAPLAN FIFO stands for:
- precise dosing volume
 - perfect repeatability
 - constant L/D ratio
 - 2000 bar injection pressure



The simple cleaning of the MAPLAN FIFO-RUBBER INJECTION UNIT

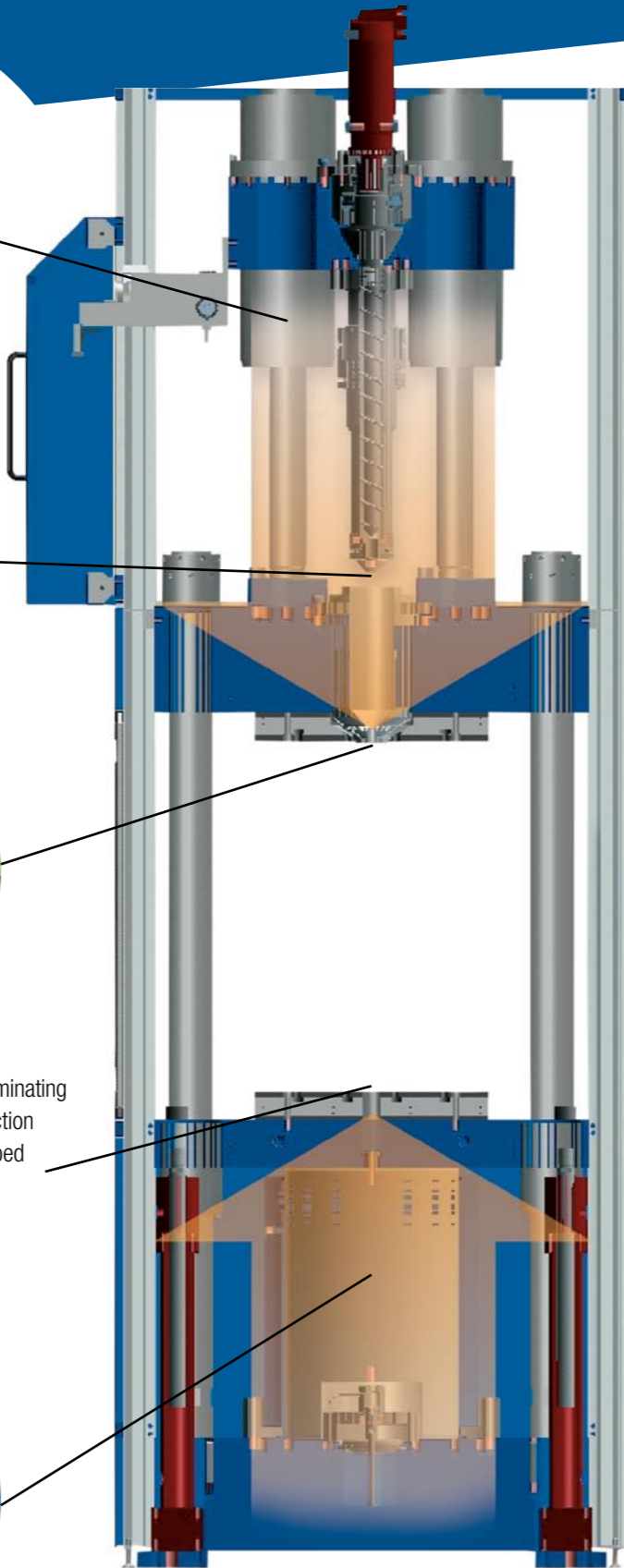
- plasticize until unit is empty
- remove remaining material

- short nozzle
- smallest pressure losses
- no nozzle retract necessary and therefore no leaks



Optimum mould clamping by eliminating deflection of the fixed plate injection side on tie bar machines equipped with the MAPLAN FIFO-RUBBER INJECTION UNIT. Ideal for flashless production of precision products.

In a world for its own – the fully hydraulic clamp system offers maximum platen support, eliminates deflection and is maintenance free. Separate fast speed cylinders provide shortest cycle times.



Always with an eye on the future

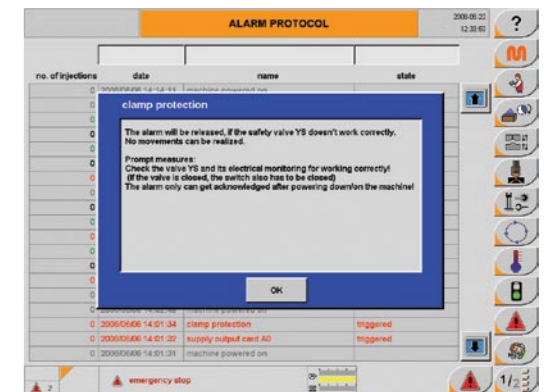


PC5000touch

Through the continuing use of the multitasking processor technology combined with the new intuitive touch screen operation panel new horizons in optimisation of the injection moulding process are opened. The dynamic multifunctional alarm- and diagnostic field offers overview in every situation.



swivable operation panel



alarm- and diagnostic function

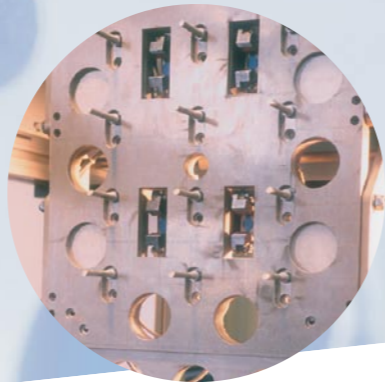
OPTIONS



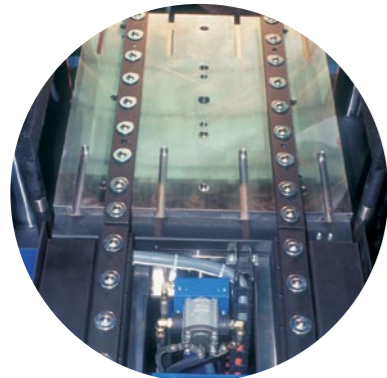
hydraulic ejectors in 4-fold synchronized execution



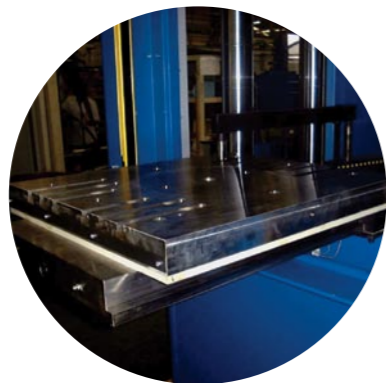
frame style center plate shuttle, manually or hydraulic operated



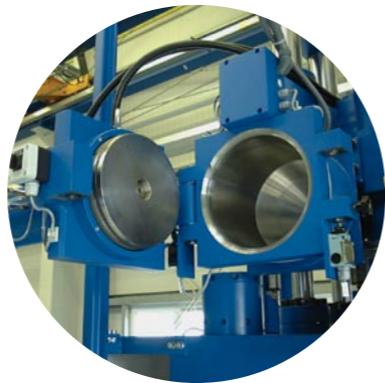
knockout devices for horizontal machines



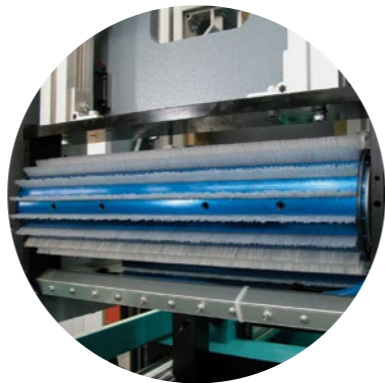
mould mounting support bars for vertical machines



hydraulic mould run out devices 100%



silicon stuffer devices in various sizes

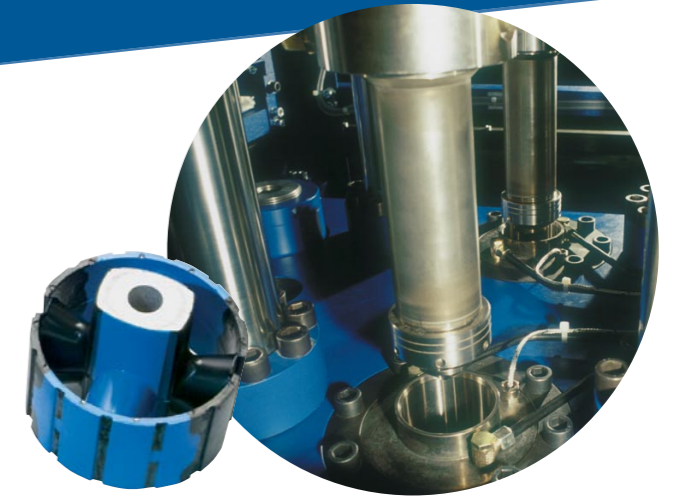


brush- and demoulding devices for horizontal machines

MAPLAN can assist you with both process optimisation and the design of entire systems. Our range of machines has been designed on a modular basis, meaning that we can take your individual requirements into account in creating the ideal system to suit your products.

SPECIAL APPLICATION

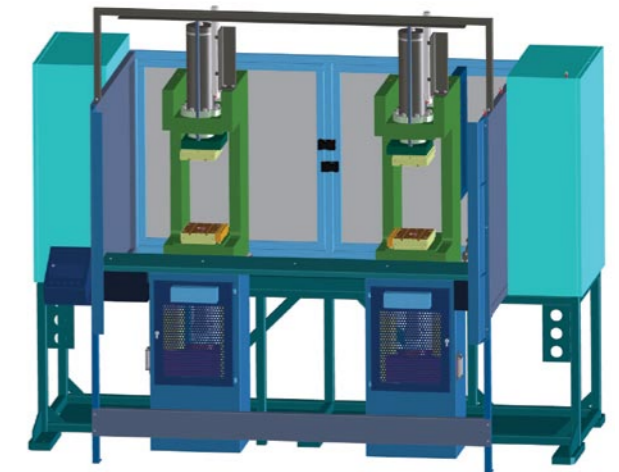
On top of the Standard product range, Maplan develops special solutions for new innovative production possibilities.



2K- two component injection moulding



„Split-line“
for up to 26400 cc as side injection units



Twin C



Turnkey Solutions

MAPLAN – NEARBY THROUGHOUT THE WORLD

www.maplan.at

● MAPLAN subsidiaries

MAPLAN Maschinen u. techn. Anlagen
Planungs- u. Fertigungs-Ges.m.b.H.
Schoellergasse 9
A-2630 Ternitz
Tel. ++43/2630/35 7 06-0
Fax ++43/2630/35 4 08
sales@maplan.at
www.maplan.at

STARLINGER North America, Inc.
900 Muirfield Drive
USA-Hanover Park, IL 60133
Tel. ++1/630 924 0100
Fax ++1/630 924 1675
sales@maplanstarlinger.com

MAPLAN France
2574, avenue des Landiers
F-73000 Chambéry
Tel. ++33/4 79 96 31 02
Fax ++33/4 79 62 15 63
sales@maplan.fr

MAPLAN Deutschland GmbH
Siemensstraße 96–100
D-70469 Stuttgart
Tel. ++49/711 98 189-0
Fax ++49/711 98 189-19
sales@maplan-germany.de

● MAPLAN representations



From the heart of Europe across the globe

Wherever you are, we're close at hand – thanks to a carefully structured network of professional sales and service partners in every part of the world. Our main factory is at Ternitz in Austria and we have subsidiaries in Germany, France and North America.

YOUR PARTNER FOR
RUBBER INJECTION MOULDING SYSTEMS

M
MAPLAN