

All dimensions in mm.

Technical data

Dosing and mixing unit Type GRAVICOLOR	30 MD	60	100	300	600 (R)	1000
Number of dosing heads	4	4	4	4 - 6	4 - 6	4 - 6
Average throughput (kg/h)	60	90	150	300	600	1000
Dosing ratio per main material %	1 - 100	1 - 100	1 - 100	1 - 100	1 - 100	1 - 100
Dosing ratio per additive %	0.1 - 10	0.5 - 10	0.3 - 10	0.3 - 10	0.3 - 10	0.3 - 10
Volume of supply hopper main material (l)	7	18	18	60	60	120
Volume of supply hopper additive (l)	7	18	18	30	60	60
Power supply (V/Hz)	1/N/PE 230/50	1/N/PE 230/50	1/N/PE 230/50	1/N/PE 230/50	1/N/PE 230/50	1/N/PE 230/50
Connected load (W)	100	100	250	300	300	300
Compressed air oil and water-free (bar)	6 - 8	6 - 8	6 - 8	6 - 8	6 - 8	6 - 8
Weight without support frame approx. (kg)	60	70	80	180	180	300
Colour RAL (orange/grey)	2011/7040	2011/7040	2011/7040	2011/7040	2011/7040	2011/7040

Subject to technical changes.

China, Beijing
Tel. +86 10 6525-8815/16/17
Fax +86 10 6522-2522
sales@motan-colortronic.com.cn

Germany, Friedrichsdorf
Tel. +49 6175 792-167
Fax +49 6175 792-284
info@motan-colortronic.de

Italy, Tortona (AL)
Tel. +39 0131-872 933
Fax +39 0131-872 941
info@motan-colortronic.it

Thailand, Bangkok
Tel. +66 2 717-1088
Fax +66 2 717-1080
info@motan-colortronic.co.th

China, Taicang
Tel. +86 512 5357-7066
Fax +86 512 5357-7055
sales@motan-colortronic.com.cn

Germany, Isny
Tel. +49 7562 76-0
Fax +49 7562 76-111
info@motan-colortronic.de

Japan*, Hiroshima
Tel. +81 82 928-6150
Fax +81 82 928-9954
info@semco.jp

USA, Plainwell
Tel. +1 269 685-1050
Fax +1 269 685-1059
motanusa@motan-inc.com

France, Evry
Tel. +33 1 608 690-18
Fax +33 1 608 690-29
info@motan-colortronic.fr

Great Britain*, Chesterfield
Tel. +44 1 246 260 222
Fax +44 1 246 455 420
info@motan-colortronic.co.uk

Singapore
Tel. +65 6873-7666
Fax +65 6873-7555
info@motan-colortronic.com.sg

Germany, Bünde
Tel. +49 5223 68544-0
Fax +49 5223 68544-11
info@motan-colortronic.de

India, Chennai
Tel. +91 44 2247-2423
Fax +91 44 2247-2422
info@motan-colortronic.co.in

Switzerland, Hunzenschwil
Tel. +41 62 889 29-29
Fax +41 62 889 29-00
info@motan-colortronic.ch

Over 90 agencies world-wide. * Partner.

www.motan-colortronic.com

GRAVICOLOR

Your benefits:

Cost savings through

- guaranteeing recipe integrity and lowest possible additive consumption using IntelliBlend
- high productivity and consistent product quality
- small space requirement
- fast and easy cleaning
- fast and easy material change
- regrind management, preventing an overdose of other components
- versatile operation (central mixing unit or machine mounted unit)
- integrated conveying control (option)

Production reliability through

- documented production process (report and print function via Ethernet or serial interface)
- simple operation – no programming necessary
- continuous self-optimisation by set/actual comparison
- regrind management
- integrated network connection (Ethernet) as standard
- maximum repeatability and extraordinary recipe accuracy through IntelliBlend

Dosing and mixing



GRAVICOLOR

Gravimetric dosing and mixing units

motan's GRAVICOLOR units dose and blend up to six materials precisely and with maximum accuracy of blend. These modular gravimetric blenders are designed for injection, blow moulding and extrusion and provide throughputs up to 2200 kg/h.

Independent of recipes, materials or the operational environment, IntelliBlend analyses all process data achieving the best possible operating point at any time through continuous self-optimisation. Recipe integrity results in an excellent and consistent product quality.

The GRAVICOLOR series forms part of the total motan range of products and systems for all stages of the management, conditioning and preparation of plastic granules. Build quality plus the engineering and service standards which motan applies to all parts of its operation ensure high performance and reliable operation.



V002_10_10_00



think materials management





GRAVICOLOR

Supply hoppers

The stainless steel supply hoppers are of modular design and available in several different sizes. Some can be removed and all are easily accessible for cleaning. The design features provide optimum flexibility for processing different materials.

Conveying

All GRAVICOLOR units can optionally be equipped with an integrated conveying control which allows the control of up to seven hopper loaders with a blower station; i.e. material handling for a 6-component mixing station with processing machine can, for example, be controlled and operated directly via the GRAVICOLOR.

For the installation of complex systems there is the possibility of networking several GRAVICOLOR units with each other or with other motan controls of the CONTROLnet family. This guarantees a high degree of flexibility and scalability in system solutions.

Installation

GRAVICOLOR units can either be mounted on the processing machine or operated as a central mixing station. In the latter case, an optional support frame with material hopper and suction box are available.

Monitoring

Large sight glasses in the hoppers and the front door of the units allow visual control of the entire dosing and mixing process.

GRAVreport (optional)

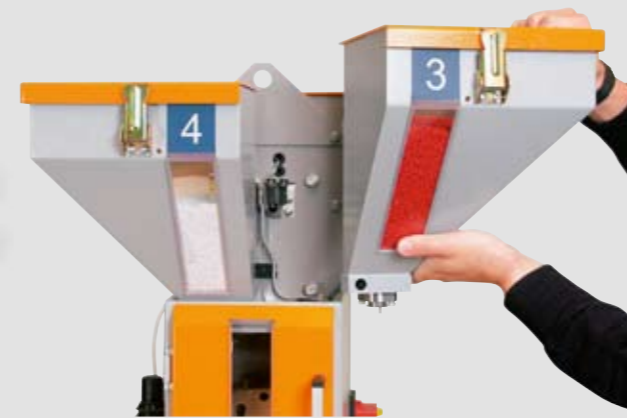
With this PC program process data of up to 252 GRAVICOLOR units can be captured and evaluated via Ethernet.

Mixing chamber

The specially developed mixing chamber guarantees total homogenisation of the batches.



GRAVICOLOR 300/600



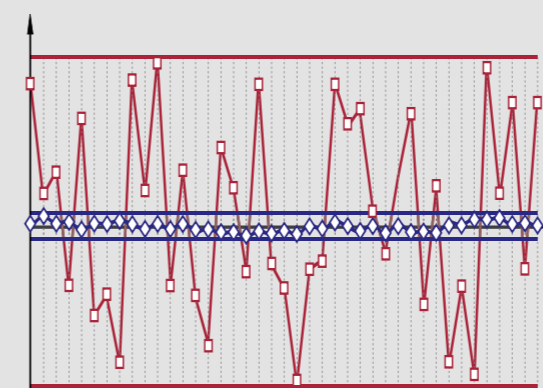
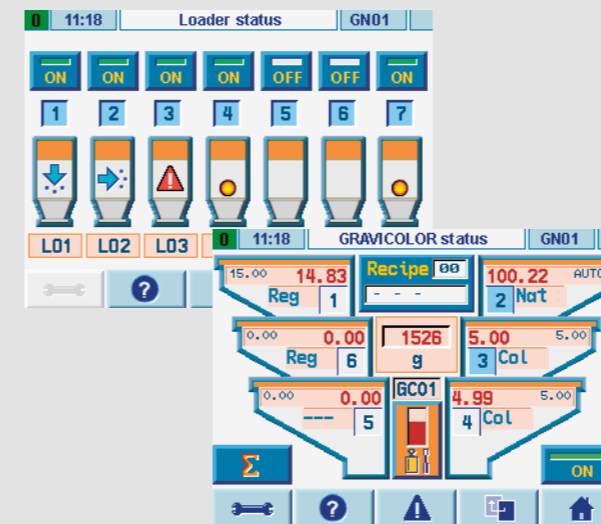
GRAVICOLOR 30 MD



GRAVICOLOR 100



GRAVICOLOR 30 MD



Blue: Recipe accuracy with IntelliBlend
Red: Recipe accuracy without IntelliBlend

Cleaning and material changes

Fast material changes require easy access to all parts in contact with the material to ensure efficient cleaning. Hinged lids and large, removable sight glasses or demountable supply hoppers enable complete and thorough cleaning of the hoppers.

Material changes are simplified by the large front door, the removable weigh bin and the easily accessible mixing chamber.

All GRAVICOLOR parts in contact with material are made of stainless steel, preventing contamination of the granulate.

GRAVInet control

The operating unit can either be mounted on the GRAVICOLOR or operated remotely. In addition, integrated Ethernet technology enables operation via a motan WEBpanel or a PC from any location. Further characteristics are:

- colour graphics display with touch panel operation
- simple intuitive handling via standardised user interface
- powerful and accurate process control with IntelliBlend, continuous self-optimisation and sophisticated vibration management
- detailed report and print functions via network or serial interfaces
- integrated network interface (Ethernet) as well as Internet technology
- integrated conveying control (optional)
- recipe management
- possibility to set up coupled line systems (optional)
- LINKnet interface for visualisation (optional)

Recipe accuracy through IntelliBlend

Except for the additive micro-dosing on the GRAVICOLOR 30 MD, all component materials are metered by the unique motan cone-dosing system. This dosing system ensures a high total material throughput, even when metering large quantities of additives. Since each component is weighed individually and using IntelliBlend, an extraordinary recipe accuracy is achieved.

The GRAVICOLOR 30 MD has a patented and highly accurate micro-dosing unit for additives or masterbatch.